

110 | MINUE STREET



For Sale

74,000 SF INDUSTRIAL PROPERTY | CARTERET, NJ

Jordan Metz
Senior Vice President
973.493.0385
jmetz3@me.com

Eric Koons
Sales Associate
908.410.7152
ekoons@bussel.com



Metz
Industrial Team

Contact Us

Exclusive Brokers:

Jordan Metz
Senior Vice President
973.493.0385
jmetz3@me.com

Eric Koons
Sales Associate
908.410.7152
ekoons@bussel.com

Ideal For
Distribution or
Manufacturing

Click here for virtual tour:



Metz
Industrial Team

This document has been prepared by Bussel Realty Corp. based on public information and information provided by owner of 758 Lidgerwood Avenue. Bussel Realty Corp. makes no guarantees, representations or warranties of any kind, expressed or implied, regarding the information including, but not limited to, warranties of content, accuracy and reliability. Any interested party should undertake their own inquiries as to the accuracy of the information. Bussel Realty Corp. excludes unequivocally all inferred or implied terms, conditions and warranties arising out of this document and excludes all liability for loss and damages arising there from. This publication is the copyrighted property of Bussel Realty Corp. and/or its licensor(s). © 2021. All rights reserved.

Property Highlights



Total Building 74,000 SF
3.57 Acre Site

Tailboard & Drive-in Loading
Ceiling Height 15' - 18'

Heavy Power
Ideal for Distribution &
Manufacturing

Great Visibility
Headquarters Layout

Potential Billboard
Access to NJ Turnpike,
Route 1-9 & NYC Markets

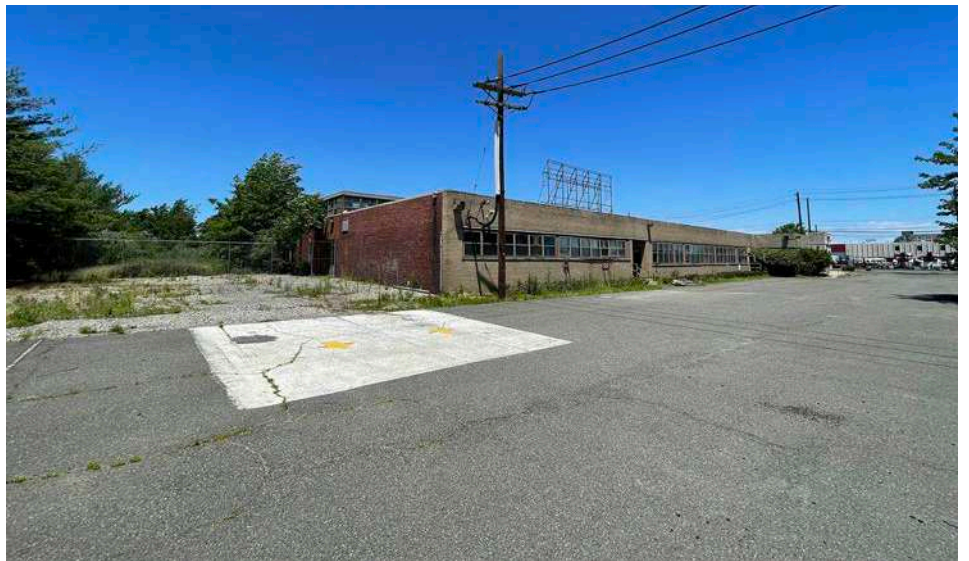
Close Proximity to Goethals
Bridge, Port Newark/Elizabeth
& Newark Liberty Airport

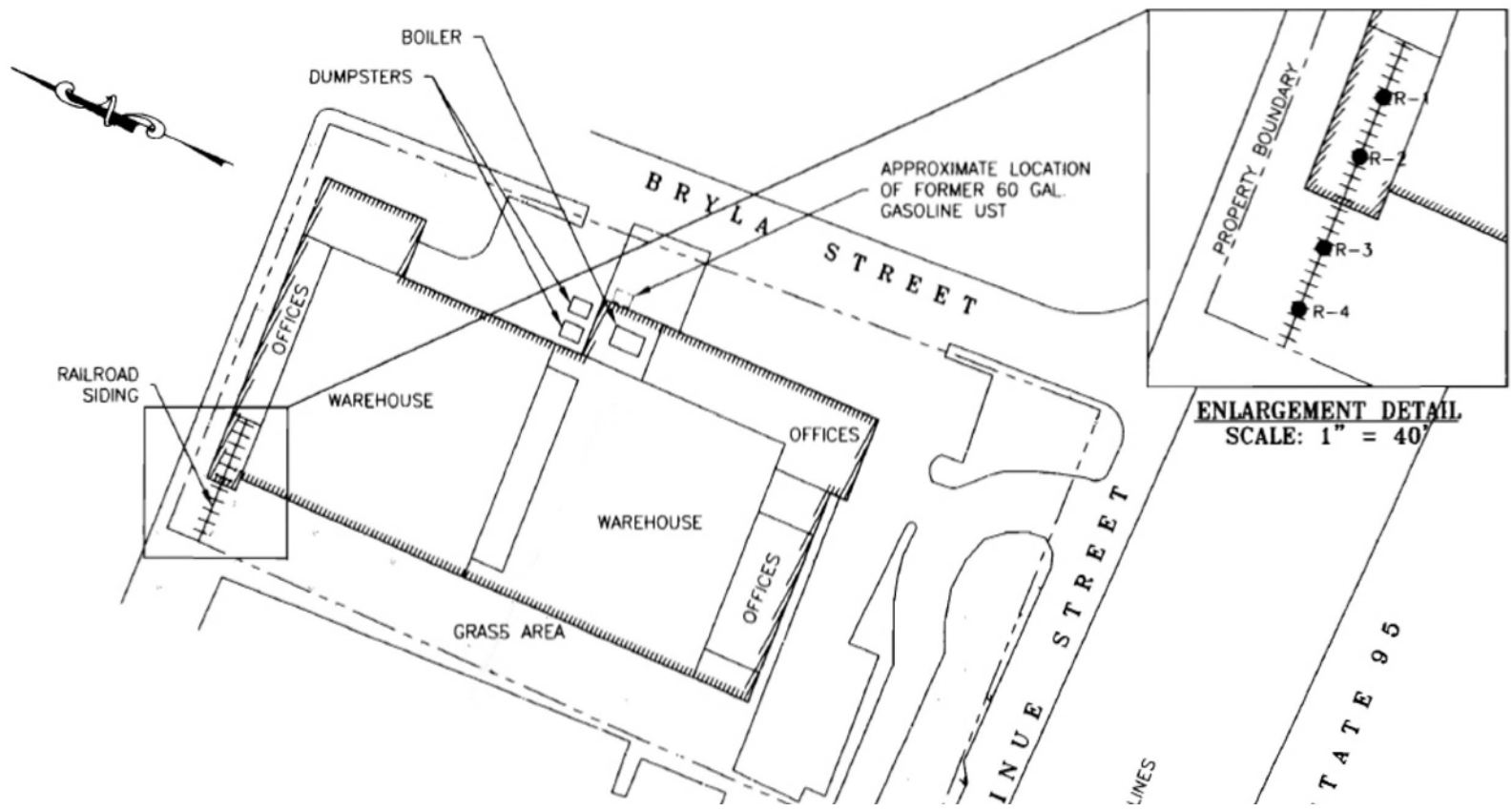
Ready for Occupancy



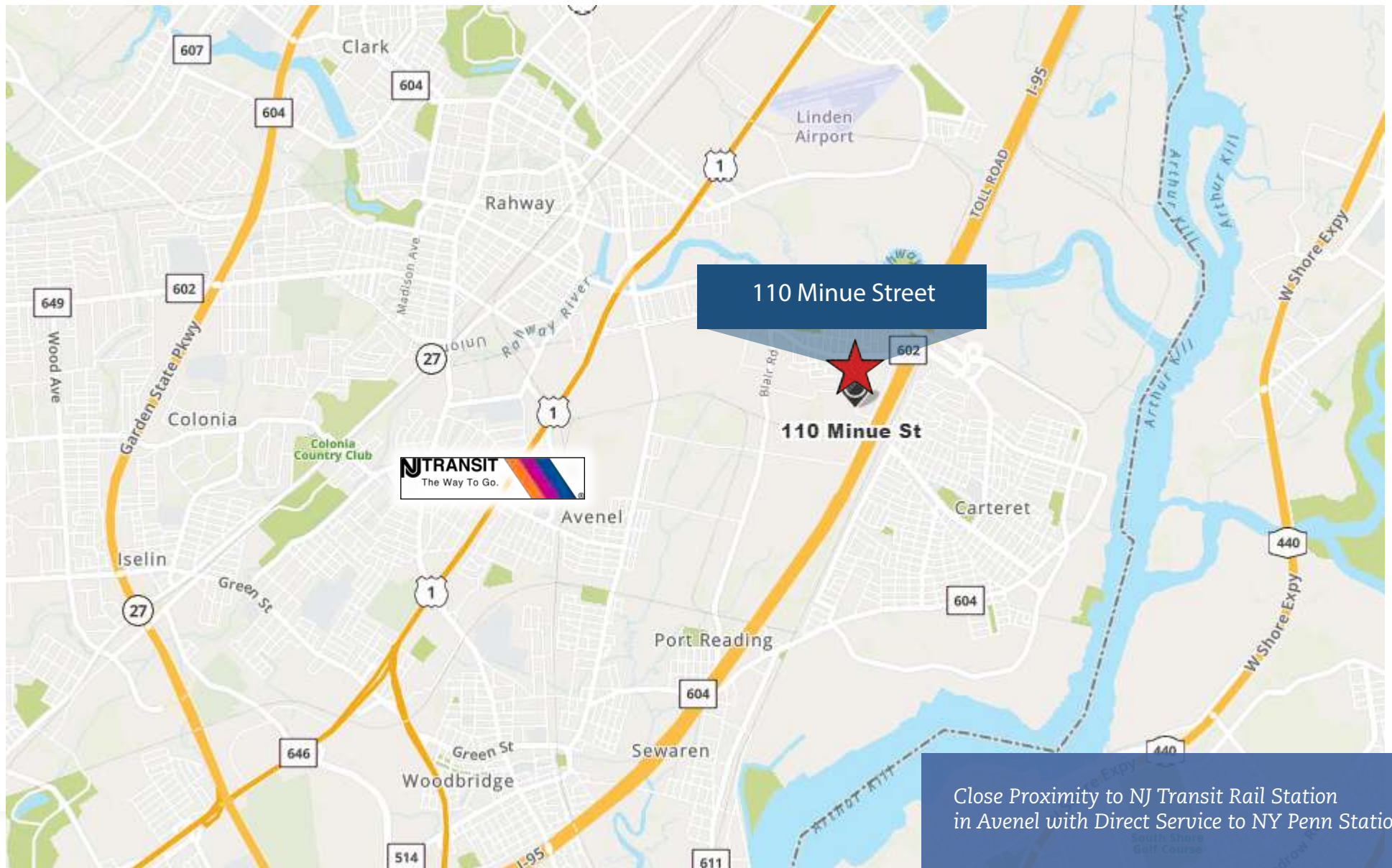


Loading & Parking





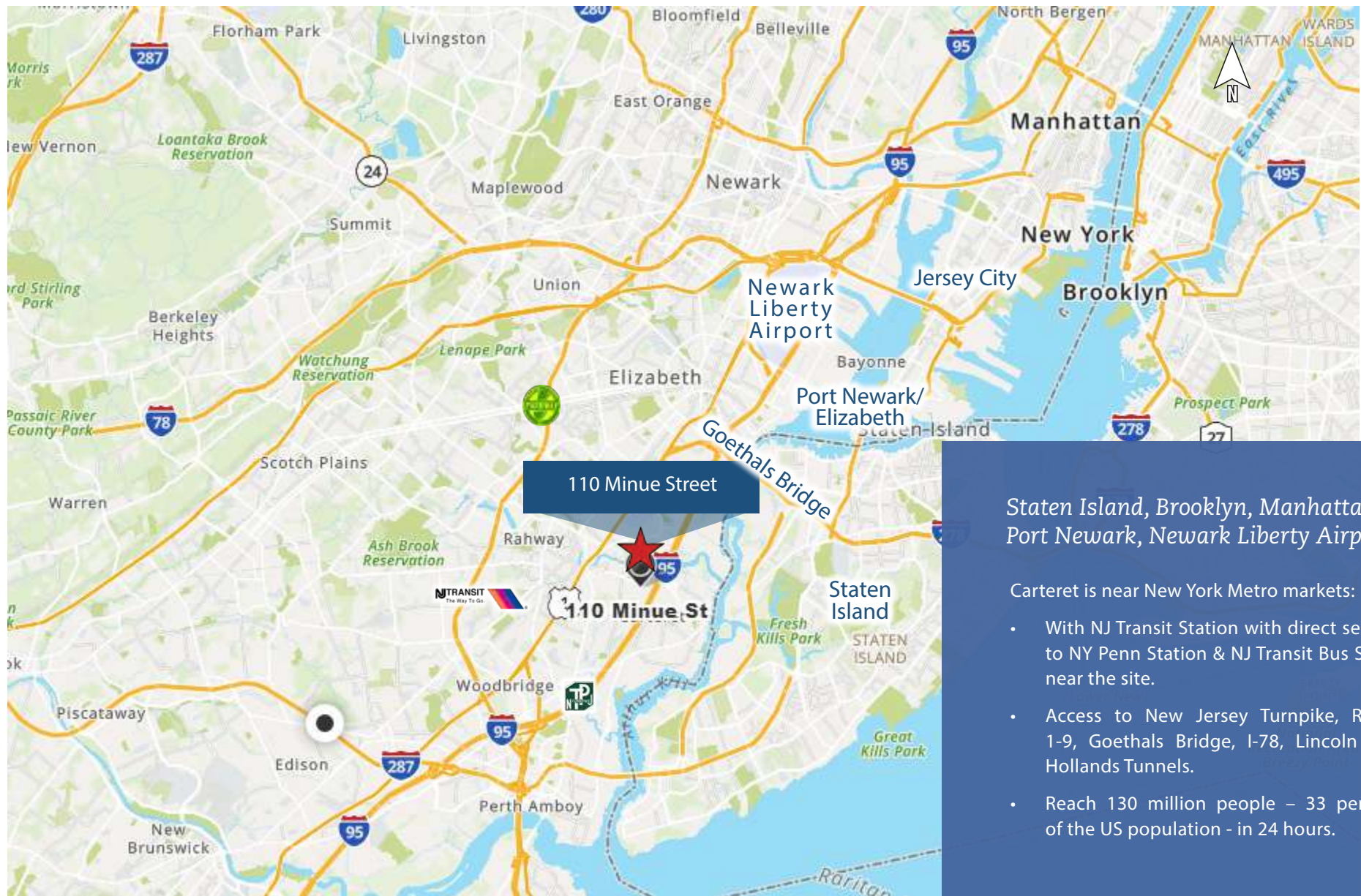
Near NJ Transit Rail Station



Close Proximity to NJ Transit Rail Station
in Avenel with Direct Service to NY Penn Station

110 Minue Street, Carteret, NJ

At the Crossroads of...

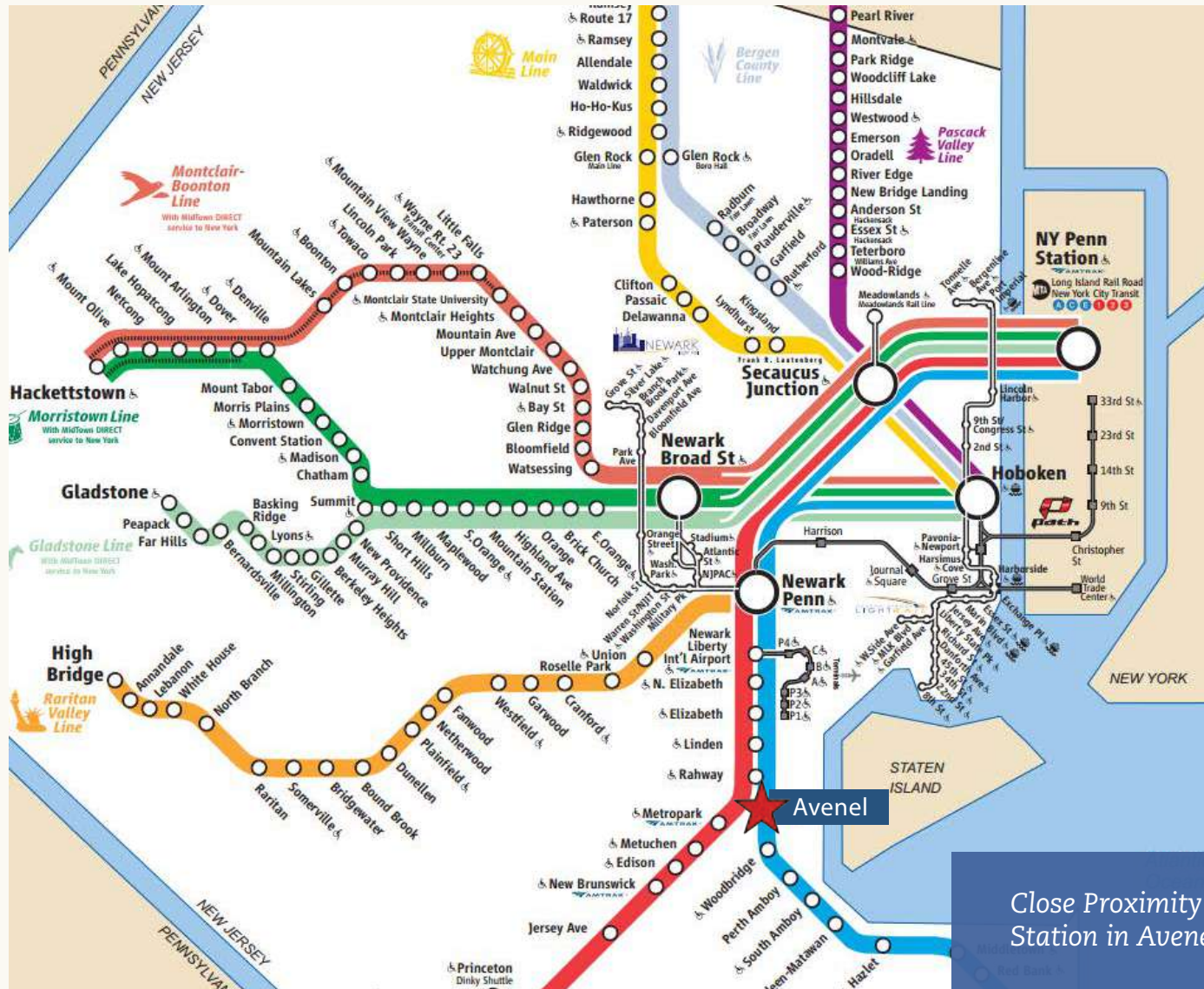


Staten Island, Brooklyn, Manhattan, Port Newark, Newark Liberty Airport,

Carteret is near New York Metro markets:

- With NJ Transit Station with direct service to NY Penn Station & NJ Transit Bus Stops near the site.
- Access to New Jersey Turnpike, Route 1-9, Goethals Bridge, I-78, Lincoln and Hollands Tunnels.
- Reach 130 million people – 33 percent of the US population - in 24 hours.

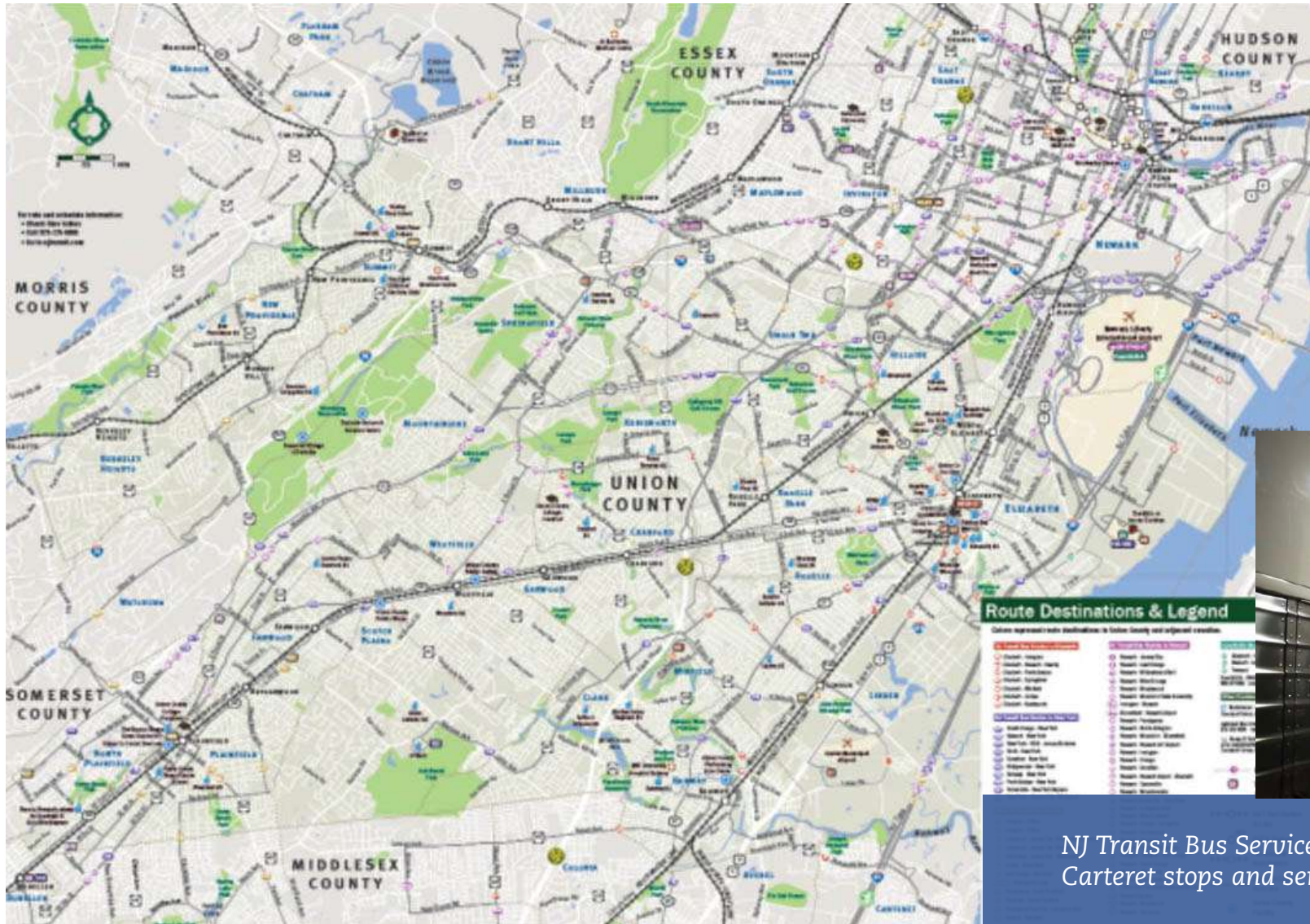
NJ Transit Northeast Corridor Line



Close Proximity to NJ Transit Rail Station in Avenel

110 Minue Street, Carteret, NJ

NJ Transit Bus Stop



NJ Transit Bus Service offers multiple Carteret stops and service to NYC

Demographic Highlights



Household Income

- In 2018, Carteret, NJ had a population of 23,700 people with a median age of 36.7 and a median household income of \$74,676.
- Households in Carteret, NJ have a median annual income of \$74,676, which is more than the median annual income of \$61,937 across the entire United States.
- This is in comparison to a median income of \$73,892 in 2017, which represents a 1.06% annual growth.



Business Environment

- The economy of Carteret, NJ employs 11,600 people.
- The largest industries in Carteret, NJ are Transportation & Warehousing (1,638 people), Health Care & Social Assistance (1,374 people), and Retail Trade (1,219 people).
- The highest paying industries are Utilities (\$67,019), Wholesale Trade (\$66,446), and Professional, Scientific, & Technical Services (\$66,375).





New Development

- Crow Holdings Announces Plans for 1.2 Million SF Industrial Property in Carteret.
- Crow Holdings announced that it has acquired a prime 126-acre property in Carteret, New Jersey from Rahway Arch Properties with plans to break ground this summer on a three-building, 1.2-million-square-foot speculative development.

- Carteret Awards \$10 Million Contract for Construction of Southern Riverwalk Along the Arthur Kill River.
- Mayor Daniel J. Reiman and NJ DEP Commissioner Shawn M. LaTourette announce a \$10 million contract awarded between the Borough of Carteret and Agate Construction Co for the construction of the long awaited southern Riverwalk, extending along the Arthur Kill River from the southern tip of Carteret's Waterfront Park and Municipal Marina to the border of Woodbridge at Tuft's Point. Construction will begin this Spring and could take up to 18 months to complete.



110 | MINUE
STREET

For more information please contact:

Jordan Metz
Senior Vice President
973.493.0385
jmetz3@me.com

Eric Koons
Sales Associate
908.410.7152
ekoons@bussel.com



Metz
Industrial Team

This document has been prepared by Bussel Realty Corp. based on public information and information provided by owner of 758 Lidgerwood Avenue. Bussel Realty Corp. makes no guarantees, representations or warranties of any kind, expressed or implied, regarding the information including, but not limited to, warranties of content, accuracy and reliability. Any interested party should undertake their own inquiries as to the accuracy of the information. Bussel Realty Corp. excludes unequivocally all inferred or implied terms, conditions and warranties arising out of this document and excludes all liability for loss and damages arising there from. This publication is the copyrighted property of Bussel Realty Corp. and/or its licensor(s).

© 2021. All rights reserved.