

# 507 | WEST ELIZABETH AVENUE



**For Lease**

15,000 SF WAREHOUSE AVAILABLE | LINDEN, NJ

Jordan Metz  
Senior Vice President  
973.493.0385  
jmetz3@me.com

Eric Koons  
Vice President  
908.410.7152  
ekoons@bussel.com

Benito Abbate  
Sales Associate  
908.655.8331  
bfa.industrial@gmail.com



Metz  
Industrial Team



# Property Highlights

Occupancy: 6/1/2022  
Available: 15,000 SF  
Office: 1,200 SF  
Parking For 2-3 Trailers  
in Addition to the Doors

Lot Size: 0.41 Acres  
22'-24' Ceiling Height  
3 Tailboards & 1 Drive-in

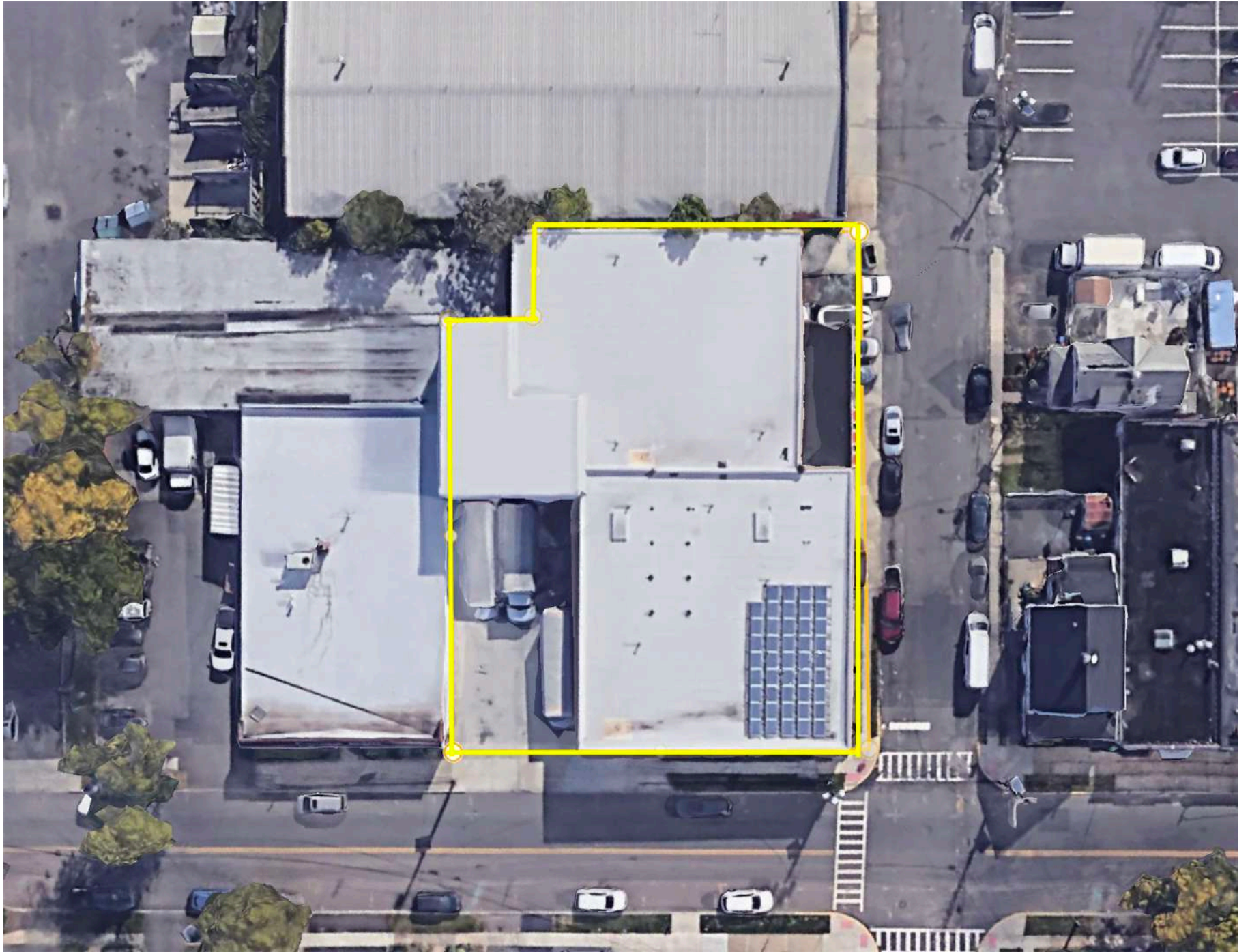
1/4 Mile to NJ Transit Train Station  
15 Minutes from Newark Airport  
20 Minutes from Port Newark/Eliz.  
1/4 Mile to Route 1-9 &  
Exit 11 of NJ Turnpike



# Loading

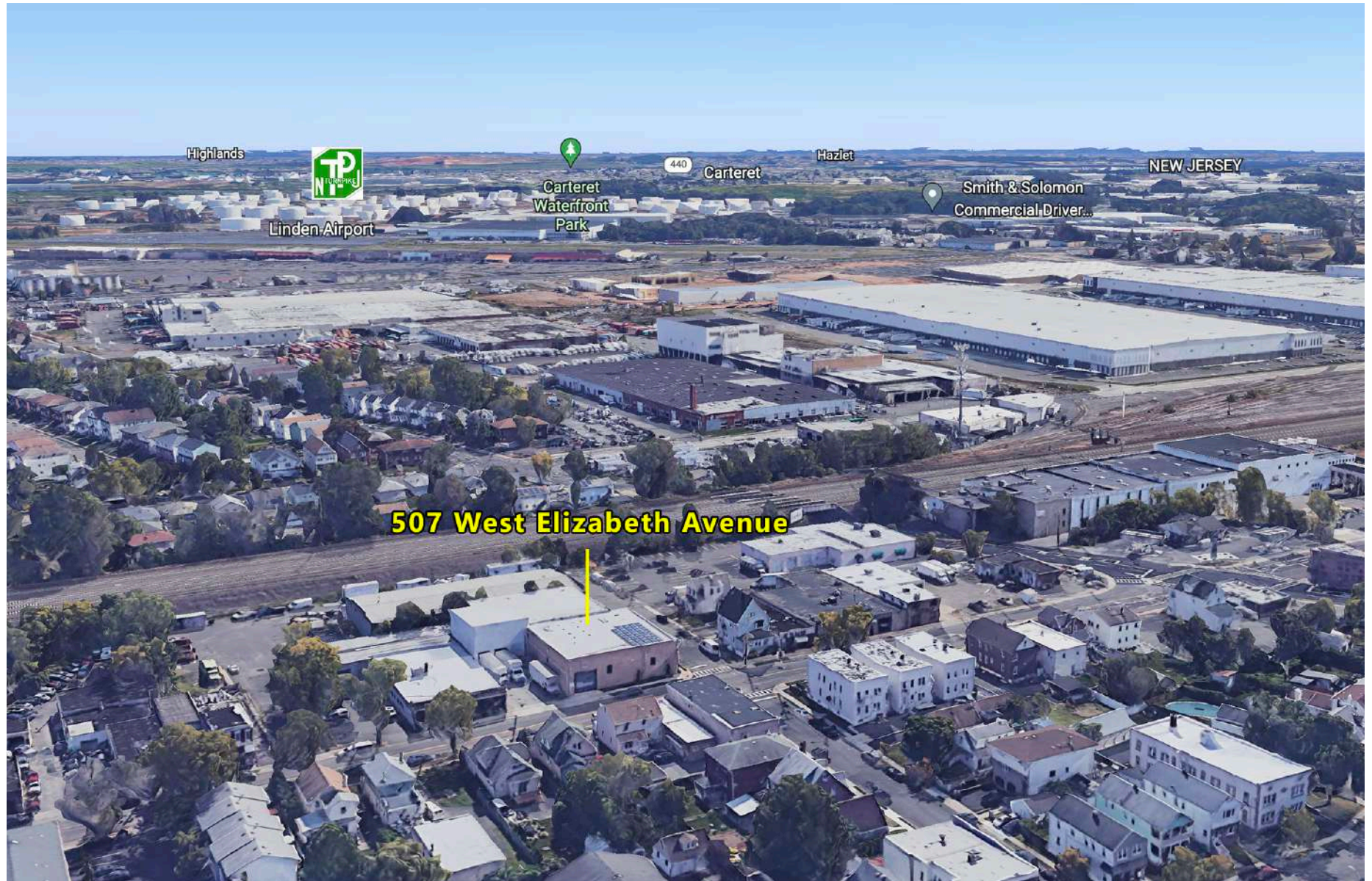






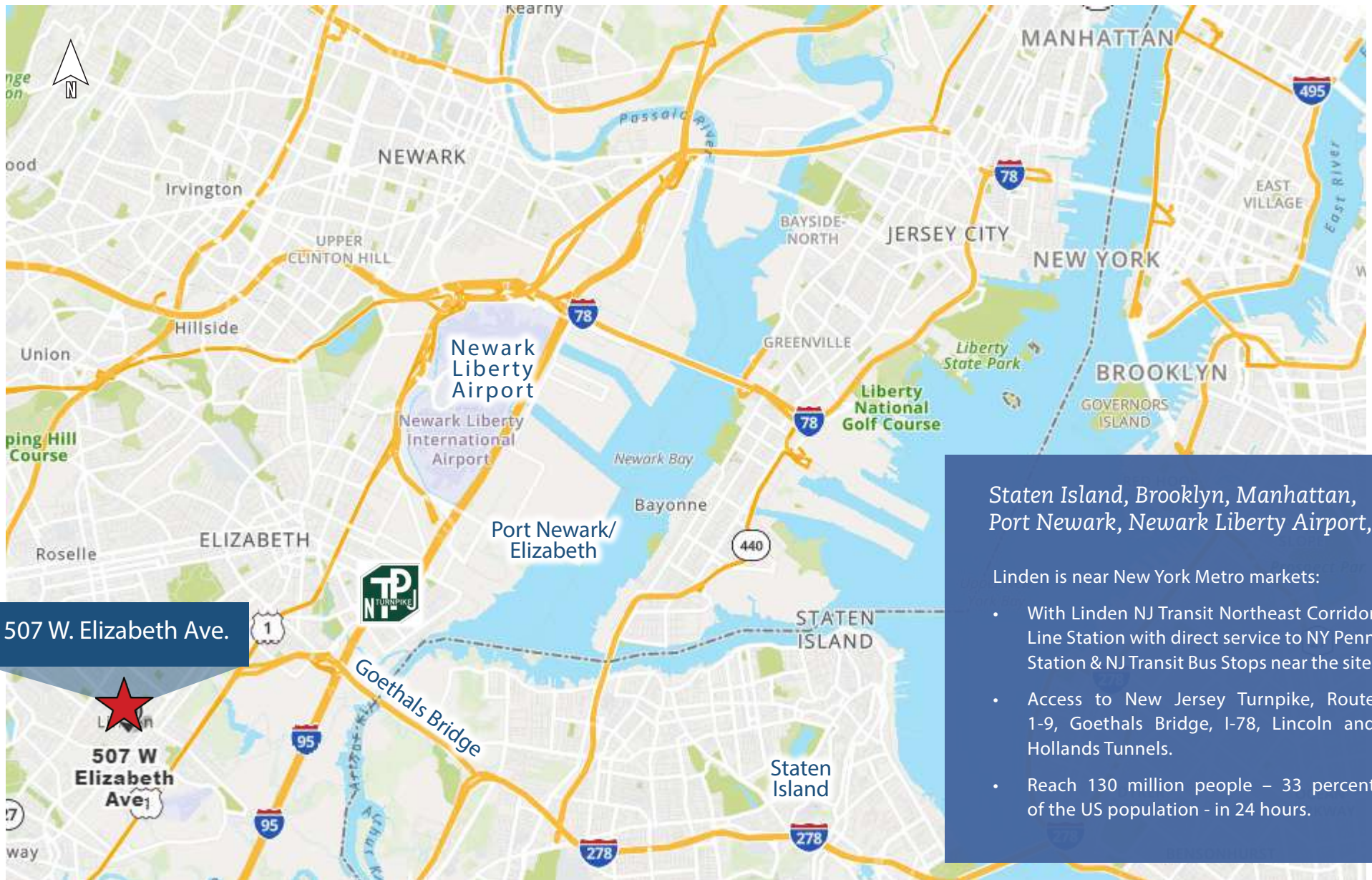


# Aerial View





# At the Crossroads of...



507 W. Elizabeth Ave.

Linden  
507 W  
Elizabeth  
Ave

Staten Island, Brooklyn, Manhattan,  
Port Newark, Newark Liberty Airport,

Linden is near New York Metro markets:

- With Linden NJ Transit Northeast Corridor Line Station with direct service to NY Penn Station & NJ Transit Bus Stops near the site.
- Access to New Jersey Turnpike, Route 1-9, Goethals Bridge, I-78, Lincoln and Hollands Tunnels.
- Reach 130 million people – 33 percent of the US population - in 24 hours.